

# 2016 2017 Strategic Commissioning Plan Performance Report Joint Seminar

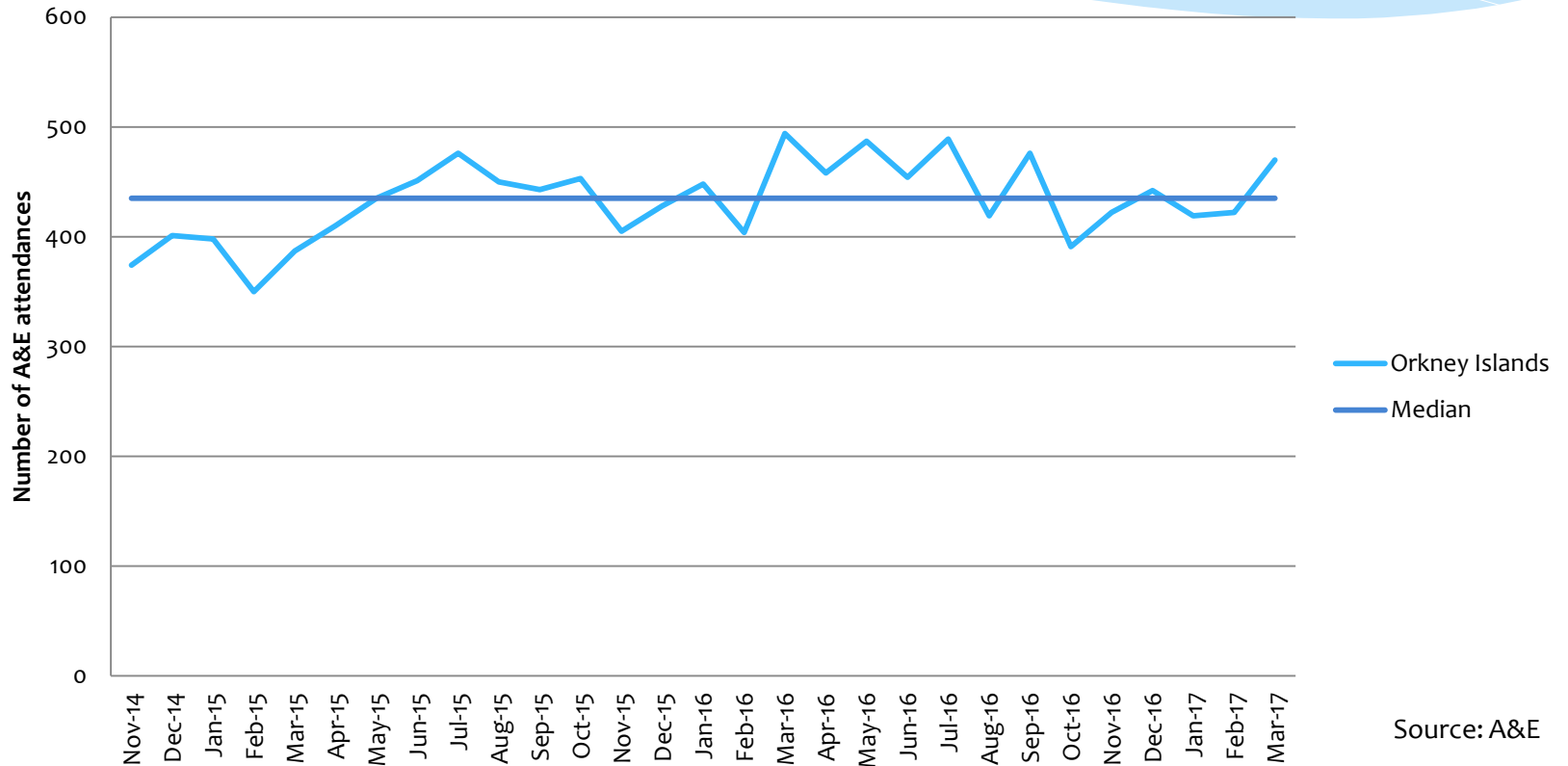
Caroline Sinclair, Chief Officer, Orkney Health and Care

# Headline Performance Information

- \* Total 57 strategic planning actions in the SCP some of which cover the full three year period
  - \* • Green – 34 actions
  - \* • Amber – 20 actions
  - \* • Red – 2 actions
  - \* • No longer applicable – 1 action
- \* Performance framework measures – that can be reported
  - \* • Green – 34
  - \* • Amber – 5
  - \* • Red – 4
- \* Joint Inspection of Services for Older People – positive
- \* On budget for social care, over by 180k or 1.1% in health services. Total overall over budget by 0.5% on budget of 35million
- \* A wide range of inspection achievements and good news stories

# Integration Indicators

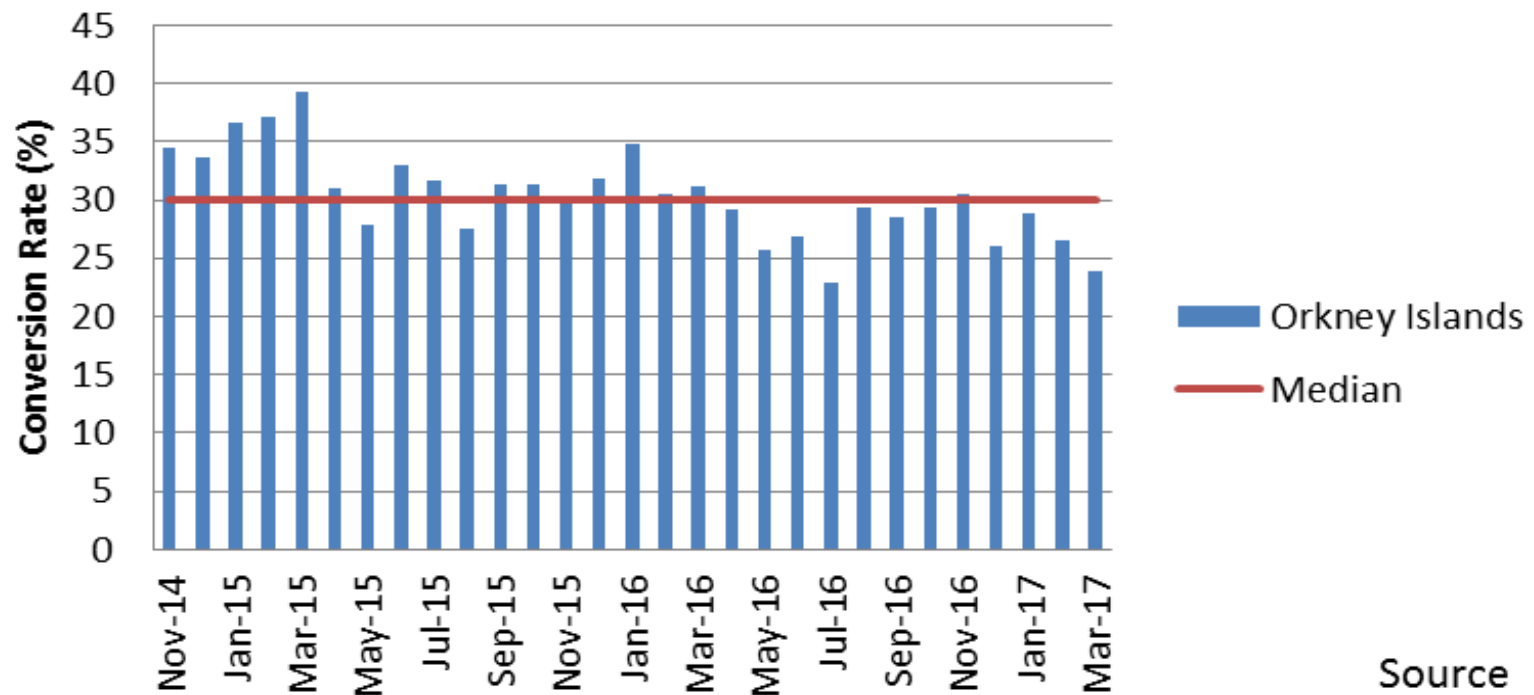
## A&E Attendances: Orkney Health & Social Care Partnership



Source: A&E

# Integration Indicators

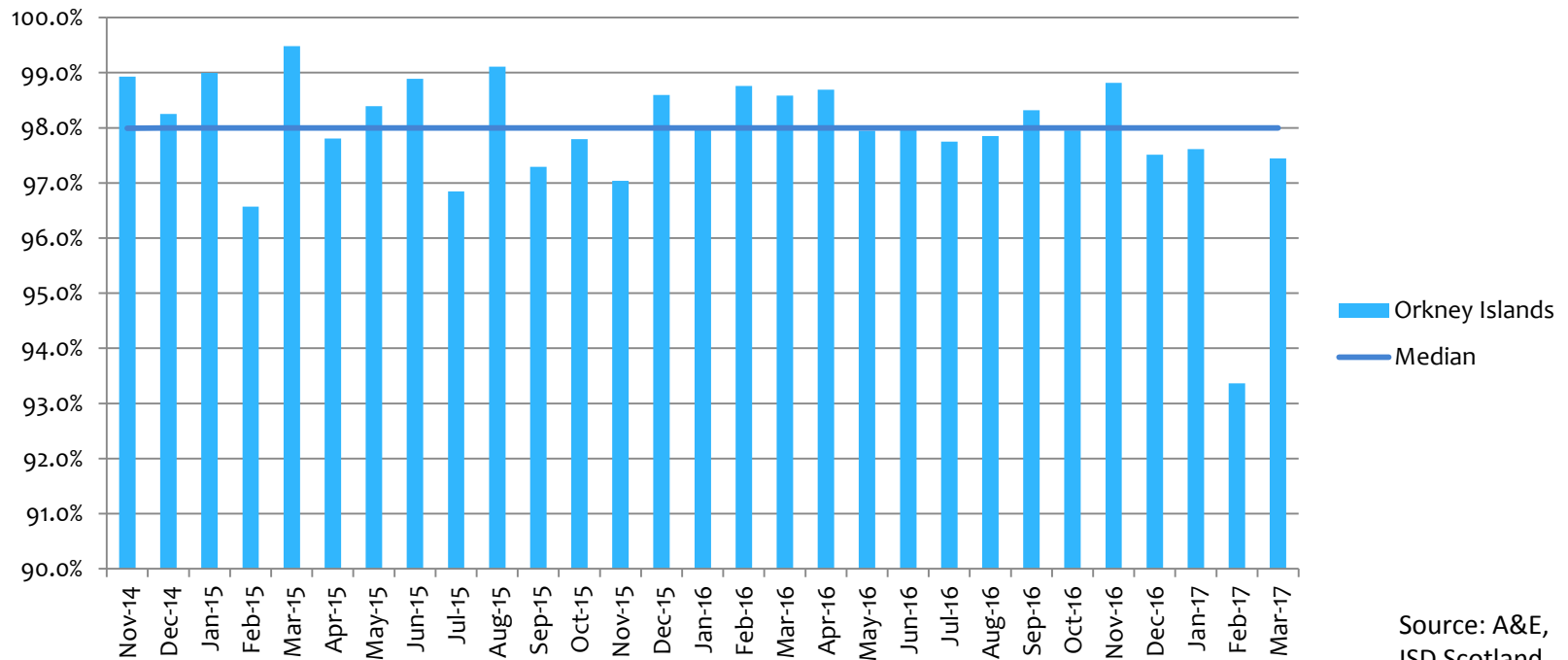
## A&E Conversion Rates: Orkney Health & Social Care partnership



Source  
A&E

# Integration Indicators

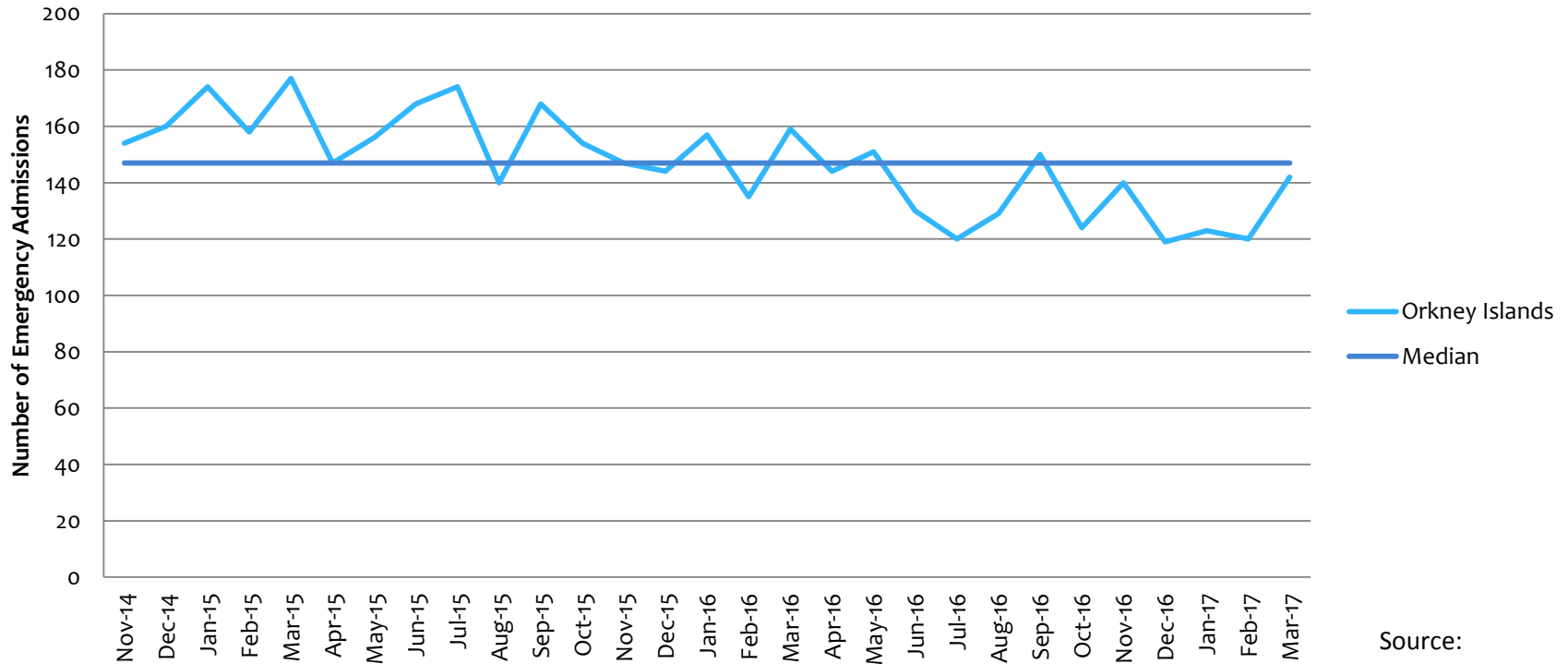
## A&E attendances (%) seen within 4 hours: Orkney Health & Social Care Partnership



Source: A&E, ISD Scotland

# Integration Indicators

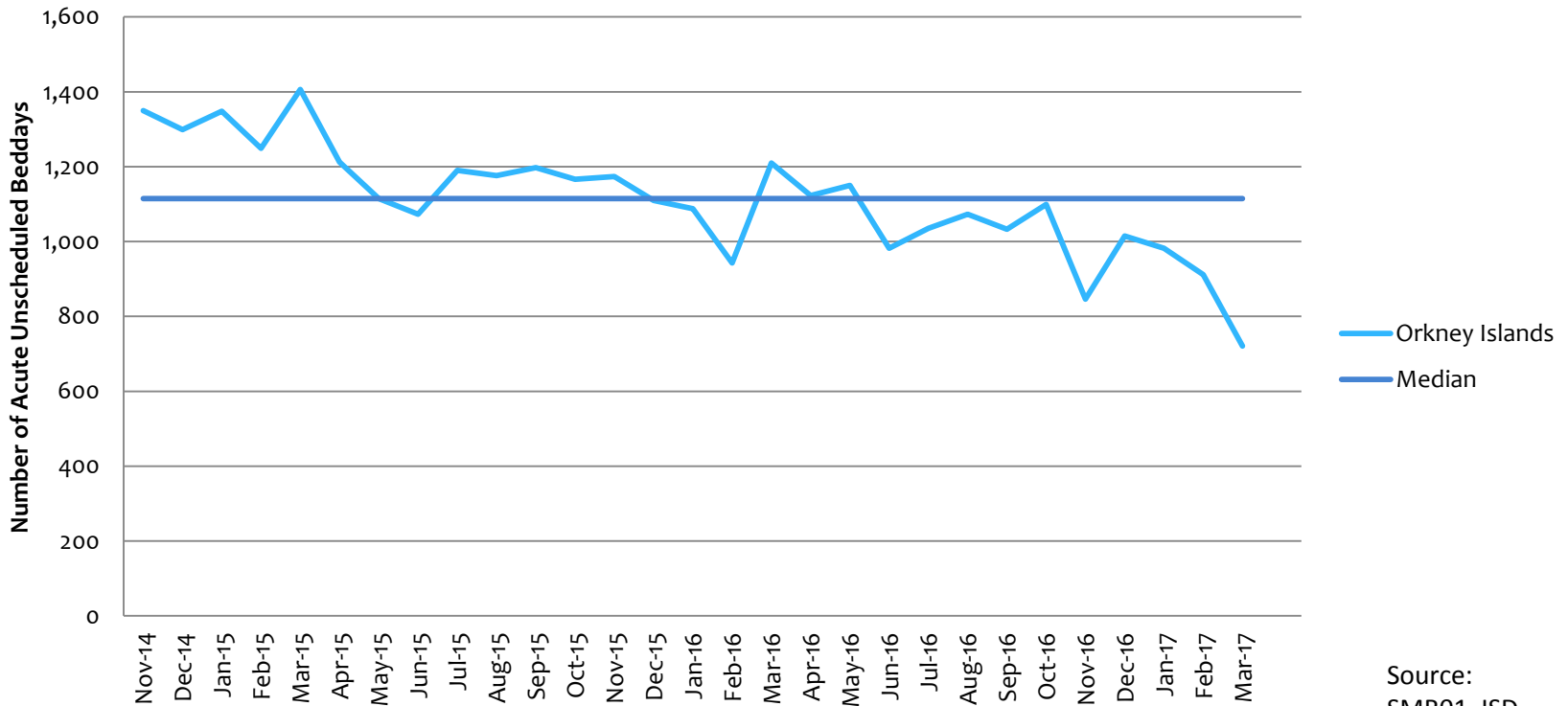
## Emergency Hospital Admissions: Orkney Health & Social Care Partnership



Source:  
SMR01, ISD

# Integration Indicators

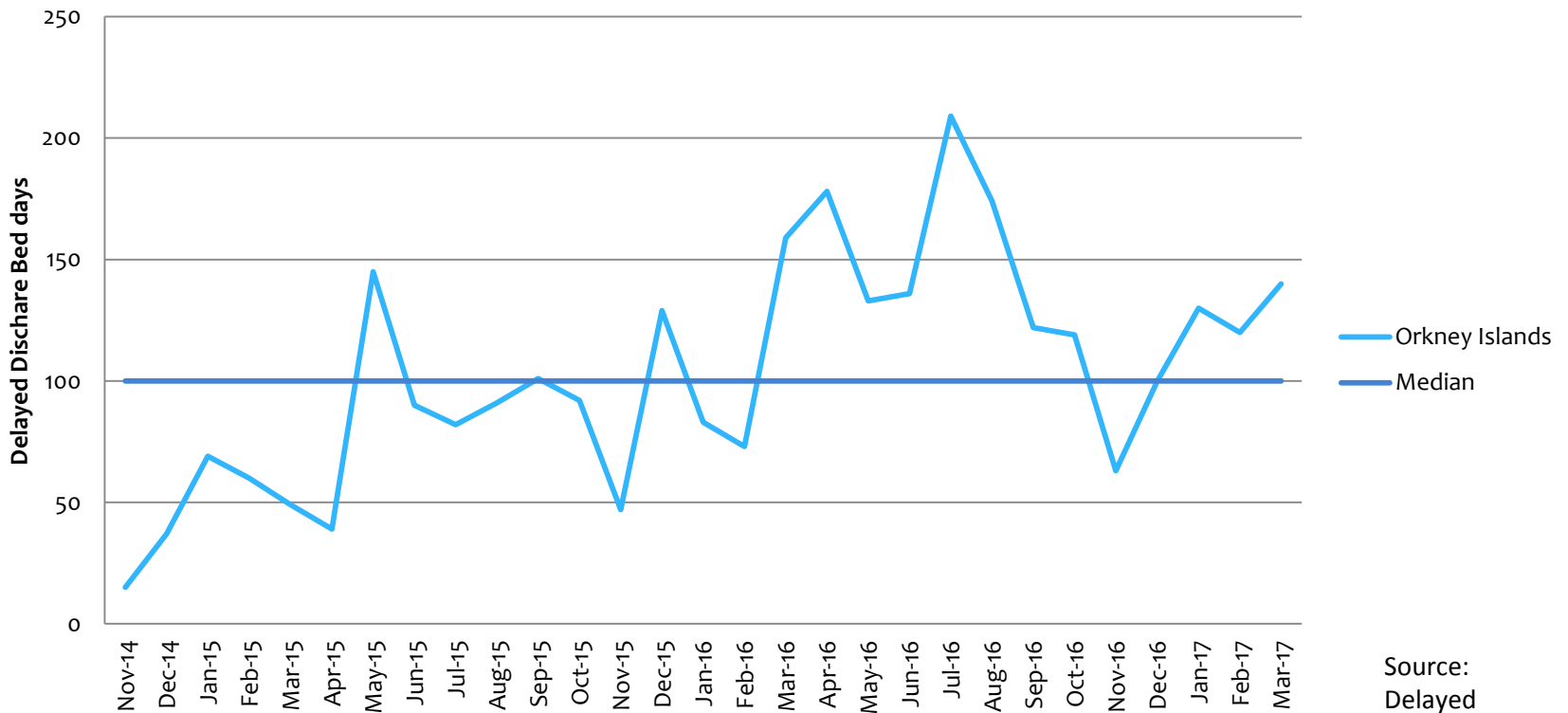
## Unscheduled Bed days (Acute Specialties): Orkney Health & Social Care Partnership



Source:  
SMR01, ISD

# Integration Indicators

## Delayed discharge bed days (All reasons):Orkney Health & Social Care Partnership

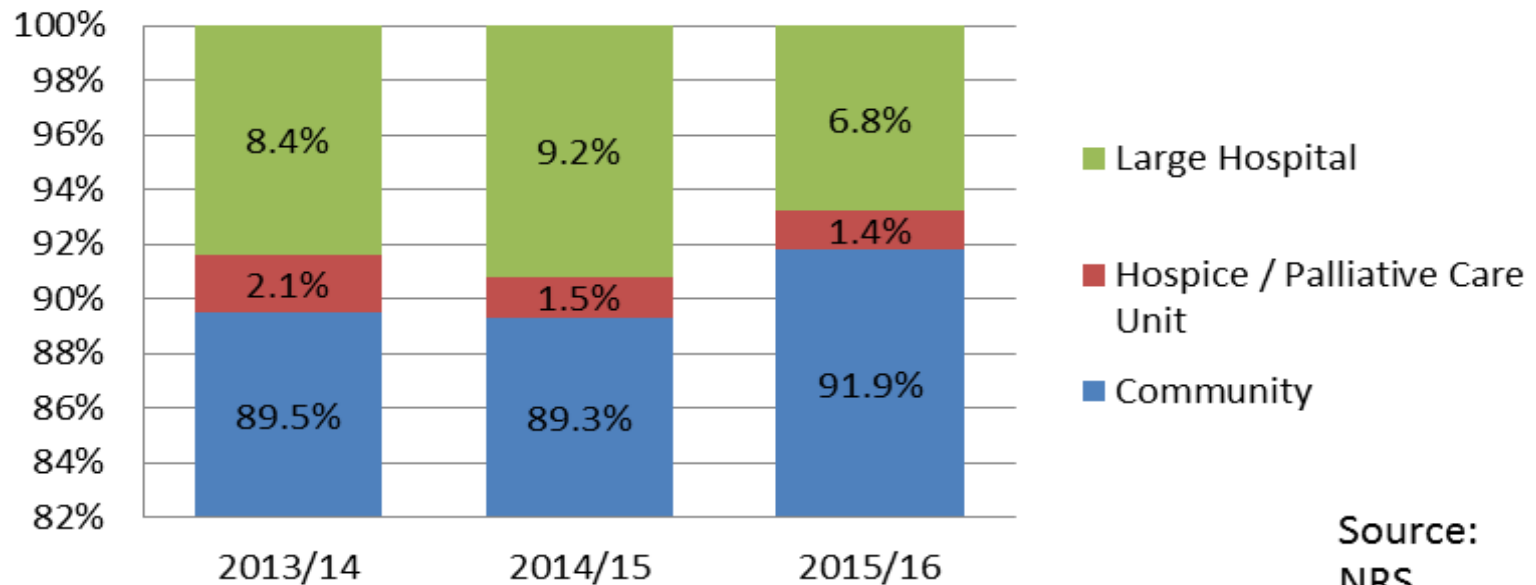


Source:  
Delayed  
Discharge



# Integration Indicators

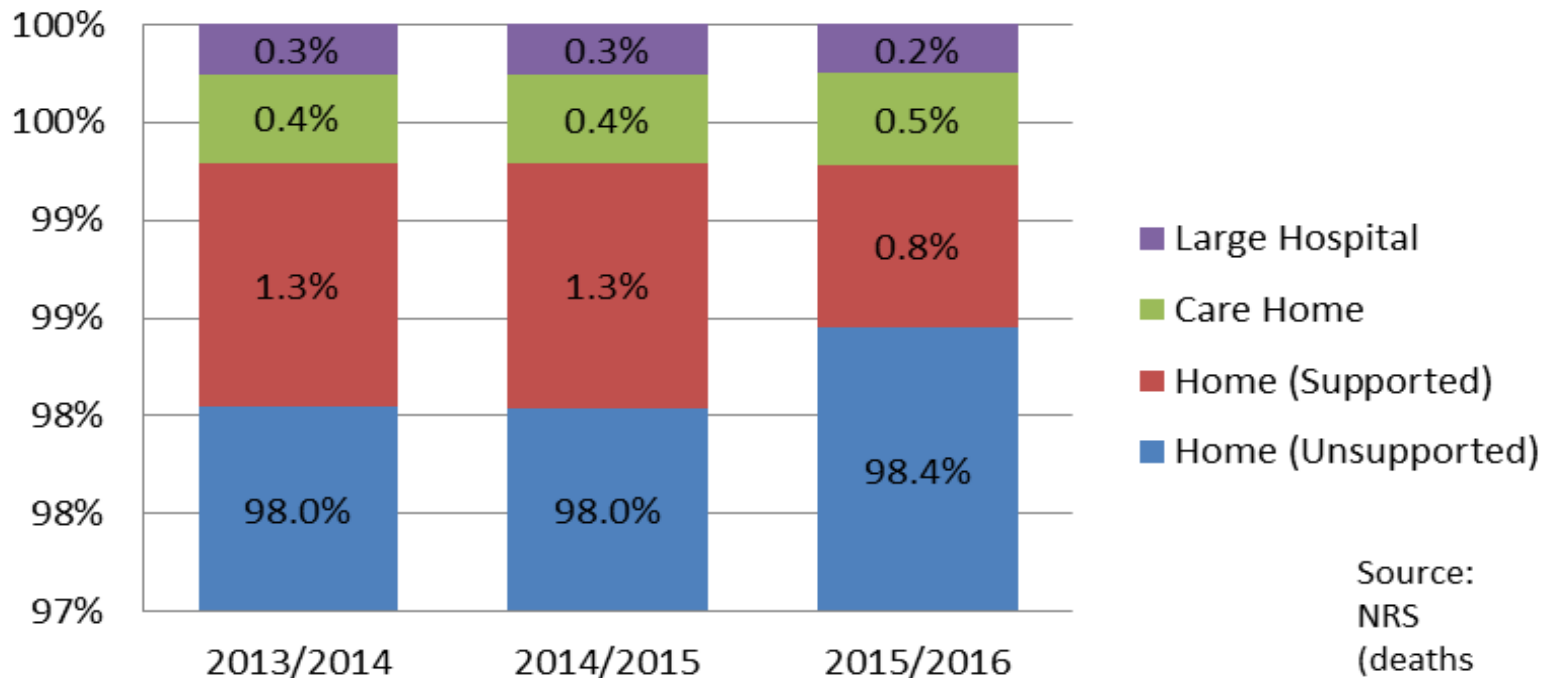
## Percentage of last six months of life by setting: Orkney Health & Social Care Partnership



Source:  
NRS

# Integration Indicators

## Balance of care (%) by setting: Orkney Health & Social Care Partnership



Source:  
NRS  
(deaths  
and non