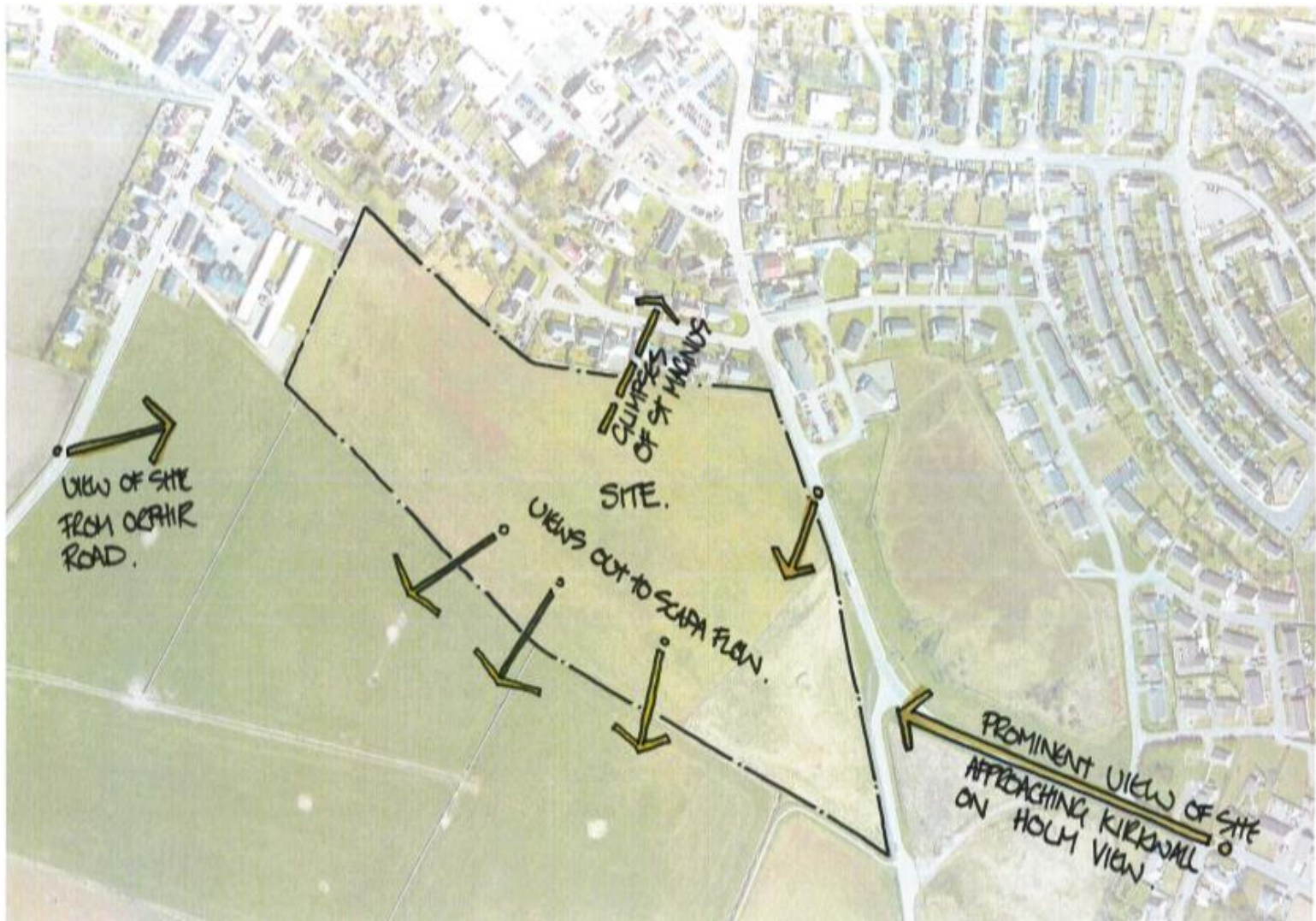


Project Team Update November/December 2014

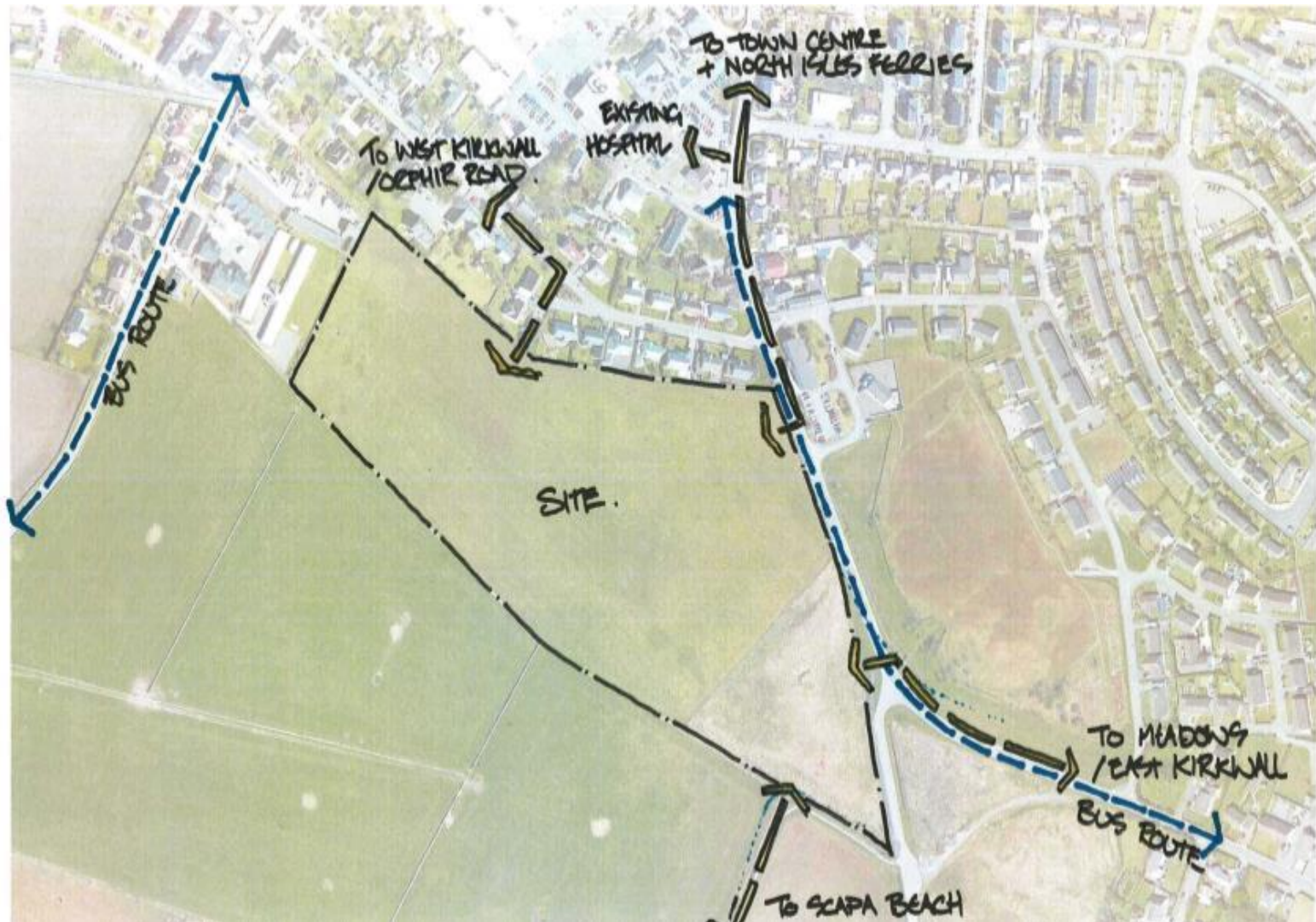


Our community, we care, you matter

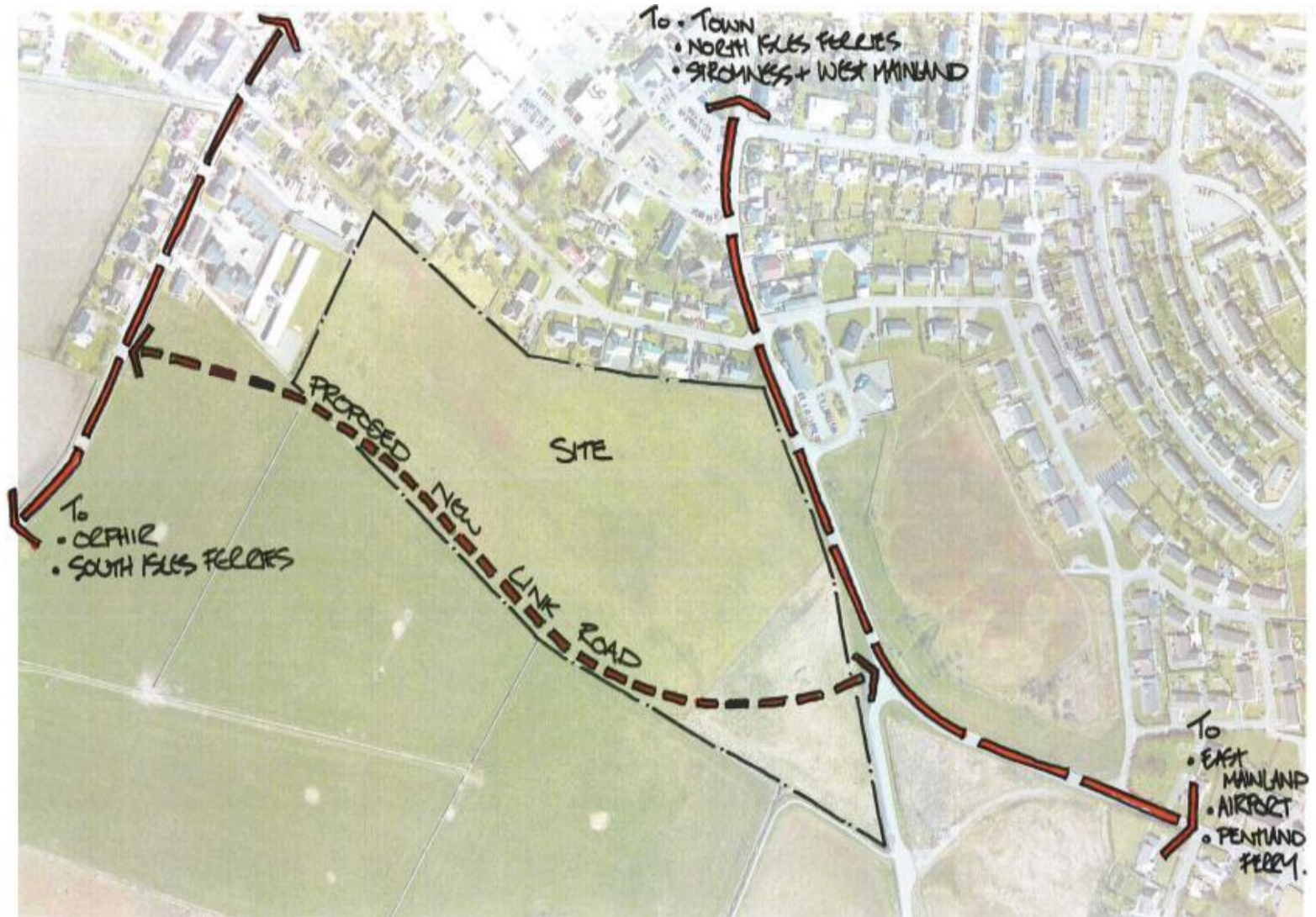
Views In / Out of Site



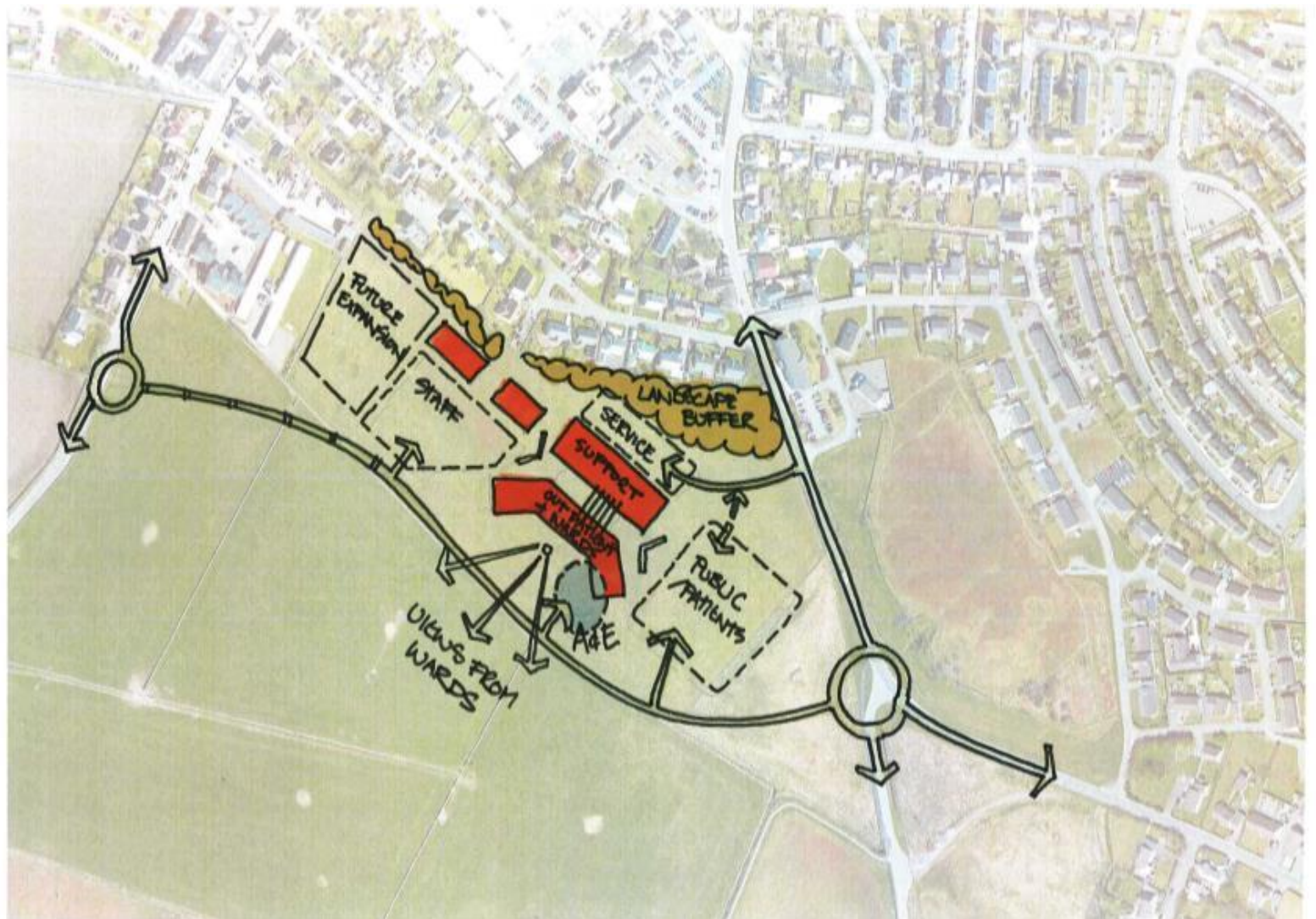
Pedestrian Linkage / Public Transport



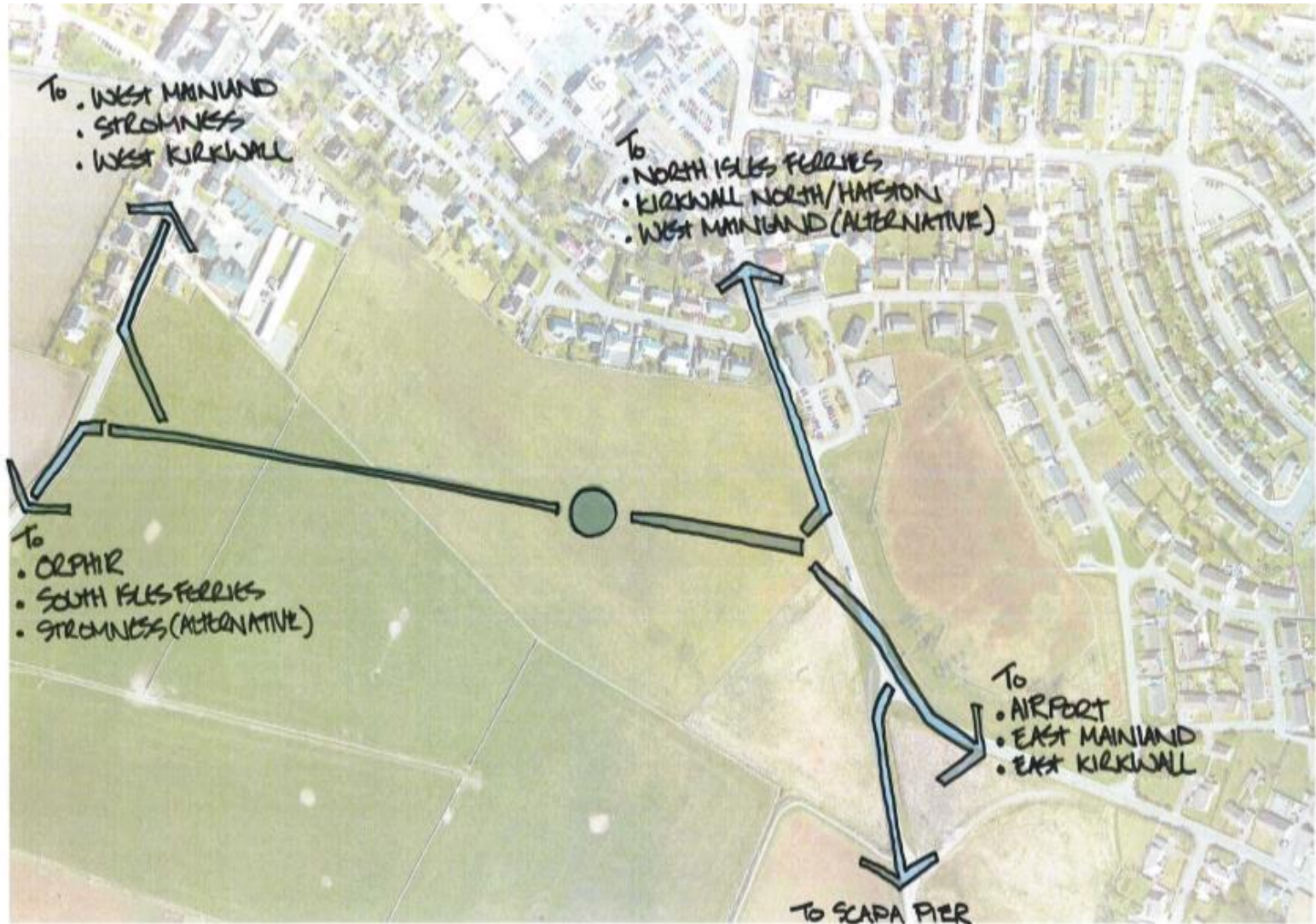
Transportation - Site Access



Reference Design - Site Diagram



Transportation – Bluelight Routes



Example list of information/documents provided in the Data Room for access by bidders

- Mason Evans Site Investigation Reports
- JBA Flood Risk Assessment Report
- Aquatera Ecology Report
- Traffic Impact Assessment
- Orca Archaeology Desk Study
- Drainage Report for Planning Hydrology Study and Risk Assessment
- Crantit Canal Catchment Study
- 4 Projects Data Manual
- Topography Survey
- Reference design
- Design Statement
- Independent Design Review - SFT Final Report
- OIC relief road drawing
- Smarter Offices Pilot Programme - SFT

Programme Timetable – key dates

Competitive Dialogue Key Dates 2014 and 2015

- ITPD Issued - 31 October 2014
- Initial Bidder Briefings - 5 Nov and 12 Nov 2014
- Competitive Dialogue Rounds - 17 Nov 2014 – 15 June 2015
- Interim Submissions – Down Selection - 2 March - 30 March 2015
- Draft Final Tender Presentation - 6 July 2015
- NHSO Response to draft Final Tenders - 27 July 2015
- Close Dialogue - 17 August 2015
- Submission of Final Tenders - 31 August 2015

Preferred Bidder and Financial Close Timetable

- Submission of Final Tenders - 31 August 2015
- Appoint Preferred Bidder - 19 October 2015
- Financial Close - 10th March 2016
- Anticipated construction period - Spring 2016 – Spring 2018

Community Benefits

The contract will require bidders to achieve or exceed targets for:-

- (These targets apply to the construction phase and bidders are invited to set targets for the operational phase)
- Targeted recruitment and training/employment and skills plan
- Supply chain development (local contractors)
- Supply chain development (Social Enterprises)

Additionally bidders will be required to propose further community benefits, for example:-

- Undertake education initiatives with community, voluntary, charitable organisations
- Support or contribute in some other way to the work of community, voluntary, or charitable organisations associated with the project.

Authorities Construction Requirements information

Describes Boards requirements for:-

- Architecture and interior design
- Construction requirements
 - Room mock-ups/clinical testing
 - Windows
 - Finishes
 - Ironmongery etc
- Security and safety systems
- Building services and structural engineering
- Landscaping
- Information and Communications Technology (ICT)

Authorities Construction Requirements

Also includes:-

- Specific Clinical Requirements
- Non Clinical Requirements (Soft FM)

and appendices

- Schedule of Accommodation
- Adjacencies matrix and ground/upper floor considerations
- Environmental Matrix
- Finishes Matrix
- Room Data Sheets
- Site status, phasing and boundary drawings

Schedule of Accommodation

- Main entrance
- Outpatients
- Therapy Area
- GP
- Emergency Department
- Dental
- Radiology
- Inpatient area
- Macmillan
- Waiting, Spiritual Care Area, WCs, Medical Records
- 12 consulting rooms, physiology room, cardiology
- 3 group rooms, Speech & Language Therapy, Podiatry, Allied Health Professionals, audiology
- 13 GP, 4 treatment, 2 receptions
- 4 treatment, 2 resus, NHS 24, OoH GP, Point of care test area, blood fridge, Mental Health transfer bed
- 3 dental, 2 hygienist, 1 Oral health
- 2 Radiology, 2 Ultrasound, CT
- 2 HDU, 2 assessment, 20 acute, 16 rehab, kitchen, inpatient therapy
- 4 inpatient, 2 consulting, 4 treatment bays

Schedule of Accommodation

- Inpatient
 - 2 HDU, 2 assessment, 20 acute, 16 rehab, kitchen, inpatient therapy
- Macmillan
 - 4 inpatient, 2 consulting, 4 treatment bays
- Maternity
 - 2 Labour, delivery, postpartum, recovery rooms – 1 pool, 2 single rooms, 1 triage, 1 consulting
- Theatres
 - 2 Theatres, 1 multipurpose, 4 recovery
- Day Unit
 - 8 trolleys, waiting area, discharge area
- Renal Dialysis
 - 5 dialysis chairs, 1 isolation
- Pharmacy
 - Dispensary, storage
- Laboratory
 - Biochemistry, haematology, Blood transfusion, microbiology, Cat II with Cat II safety cabinet

Schedule of Accommodation

- ▶ Facilities Management area
- ▶ Medical Physics
- ▶ Laundry
- ▶ Kitchen
- ▶ Restaurant
- ▶ Soft seating area and vending
- ▶ Stores
- ▶ Mortuary
- ▶ SAS
- ▶ Information management and technology

External Spaces

- ▶ Parking – 320 with disabled spaces, electric charging points, bike (motor and cycle) spaces
- ▶ Pedestrian footpaths
- ▶ Utilities building
- ▶ Garage
- ▶ Landscaping and gardens

Supporting Accommodation

- Central & Endoscopy Decontamination Unit
- Breast feeding accommodation
- Spiritual Care area
- Adult change area
- Clinical Support Building – with conference suite
- Outdoor garden space
- Sitting rooms – Macmillan, Maternity, Rehab

Supporting Accommodation

- Staff change
- Staff rest
- Multidisciplinary Training area
- WCs
- Waiting areas

Clinical Requirements

- Electronic patient records
- Deliver effective community based care
- Transforming Outpatient Services
- Local Unscheduled Care Action plan
- Improvement and Co-Production Plan
- New clinical pathways
- Healing environment
- 7 day discharge and responsive transport
- Key adjacencies
- Intermediate Care Team Infrastructure

Next Stages

- ▶ Competitive dialogue continues
- ▶ Staff drop ins
- ▶ Service plans to reflect new models of care detailed in Clinical Output Specifications
- ▶ Operational Policies for all services to be developed
- ▶ Equipment audit and detailed responsibilities matrix
- ▶ Clinical services summary sheets to be developed and uploaded
- ▶ Communication and engagement – schools, community groups, public